

LOOKBOOK

OLIVIA BURTON
L O N D O N

FW23 February Market
WATCH COLLECTION

OB Signature

FALL/WINTER 2023

Drawing inspirations from the world around us, our OB Signature line effortlessly merges our most iconic motifs with timeless silhouettes.

From the tiniest bee to a field of springtime blooms or a radiant starry night, these pieces are the new Olivia Burton icons.



MINIMA BEE T-BAR



FLORAL BLOOMS



CELESTIAL NOVA

OB Signature

MINIMA BEE T-BAR

Elegant, refined and undoubtedly Olivia Burton.

The Minima Bee timepiece offers a feminine rounded case with those all important little touches that make our watches so special.

Delicate tiny bee motif, intricate honeycomb dial and radiant finish pays homage to nature at its best.



MINIMA BEE T-BAR

Quartz Movement
3BAR



ICONIC BEE DETAIL



**INTRICATE
HONEYCOMB DIAL
DESIGN**



**SMOOTH
SCULPTED CASE**

OB Signature

MINIMA BEE T-BAR



24000098

36MM SS 3H T-Bar Silver White Dial,
Honeycomb and Bee Detail,
Cranberry Leather Strap

\$135



24000099

36MM GP 3H T-Bar Black Dial GP Accents,
Honeycomb and Bee Detail,
Black Leather Strap

\$145



24000095

36MM SS 3H T-Bar Soft Blush Dial,
Honeycomb and Bee Detail,
SS Mesh Strap

\$145



24000096

36MM GP 3H T-Bar Lt Gold Dial,
Honeycomb and Bee Detail,
GP Mesh Strap

\$165



24000097

36MM CG 3H T-Bar CG Dial,
Honeycomb and Bee Detail,
CG Mesh Strap

\$165

OB Signature

FLORAL BLOOMS

Our Signature Floral Blooms collection is inspired by the glorious English countryside.

This sophisticated floral timepiece strikes the perfect balance between artistic and contemporary with its radiant sunray dial, intricate floral design and elegantly styled ultra slim case.



FLORAL BLOOMS

Quartz Movement
3BAR



ENGLISH
FLORAL PRINT



RADIANT
SUNRAY DIAL



ULTRA SLIM
SCULPTURED CASE

OB Signature

FLORAL BLOOMS



24000113

35mm SS Ultra Slim Floral,
Silver Sunray Dial with Black Print,
Antique Pearl Leather Strap

\$135



24000112

35mm GP Ultra Slim Floral,
Gold Sunray with Black Print,
Black Leather Strap

\$145



24000115

35mm SS Ultra Slim Floral,
SS Sunray Dial with Cool Grey Print,
SS Mesh Strap

\$145



24000114

35mm GP Ultra Slim Floral,
Lt Gold Sunray Dial with Gold Print,
GP Mesh Strap

\$165



24000116

35mm CG Ultra Slim Floral,
Blush Sunray Dial with Mocha Print,
CG Mesh Strap

\$165

OB Signature CELESTIAL NOVA

Inspired by clear, beautiful evenings.

The Celestial Nova watch is a stylish mix of endless night sky and shiny sparkling stars.

The dramatic Northern Star centre piece, illuminated moon and sprinkling of stardust is perfectly showcased within the smooth, sculptured case and luxury leather or 5 bar bracelet.



CELESTIAL NOVA

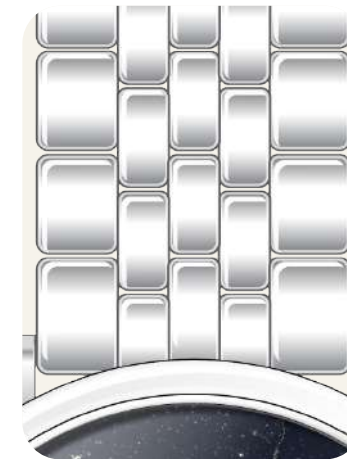
Quartz Movement
3BAR



MULTI-DIMENSIONAL
COSMIC DESIGN



RADIANT
STARDUST DIAL



LUXURY
BRACELET
OR STRAP

OB Signature

CELESTIAL NOVA



24000080

35mm SS Ultra Slim Celestial,
Sapphire Blue Dial, GP/SS Details,
5 Link Bracelet

\$145



24000081

35mm GP Ultra Slim Celestial,
Sapphire Blue Dial, GP Details,
Sapphire Leather Strap

\$145



24000079

35mm GP Ultra Slim Celestial,
Mushroom Dial, SS/GP Details,
5 Link Bracelet

\$165

Sports Luxe

MINI HEXA

Effortless styling for every occasion.

Our Sports Luxe collection combines timeless designs inspired by everything from architectural structures, floral ornamentation to classic sport timepieces with a chic-meets-sport aesthetic.

Our newest addition, the Mini Hexa, is the ultimate lifestyle watch. Seamlessly merging a classical sporty silhouette, on trend colour palette with sophisticated detailing and finish.



MINI HEXA
Quartz Movement
3BAR



**DELICATE
FLORAL DIAL
PRINT**



**MODERN GEOMETRIC
TWO-LAYERED CASE**



**INTEGRATED
BRACELET STRAP**

Sports Luxe

MINI HEXA



24000108

28MM SS Silver White Dial
with Silvery Grey Print,
3 Link Bracelet

\$155

24000106

28MM CG Cranberry Dial
with Chalk Pink Print,
3 Link Bracelet

\$175

24000107

28MM GP Mushroom Dial
with Warm Grey Print,
3 Link Bracelet

\$175

24000109

28MM GP Lt Gold Dial
with Tonal Metallic Print,
3 Link Bracelet

\$175

24000110

28MM CG Tonal CG Dial
with Tonal Metallic Print,
3 Link Bracelet

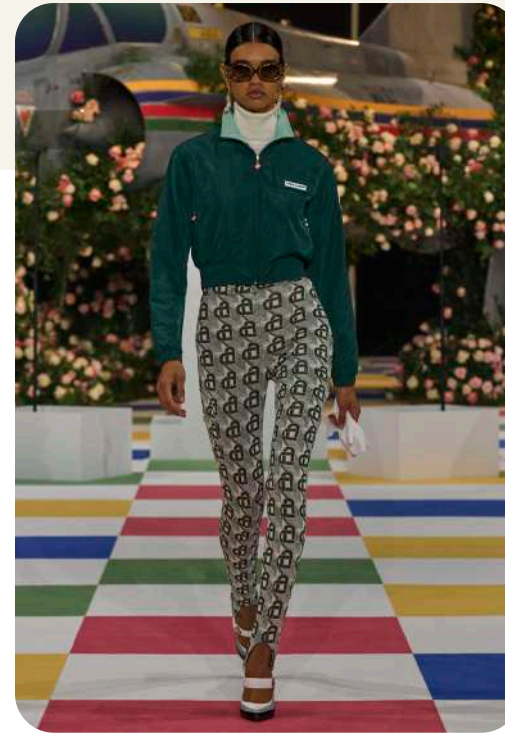
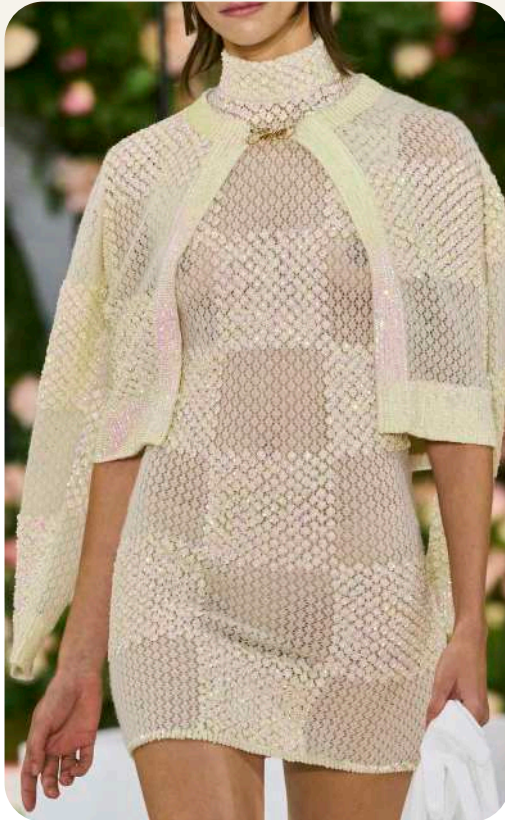
\$175

Soft Square

FW23 KEY TREND

This season we are inspired by the soft side of geometry with a trend that's cutting corners in textiles, homeware and the runway.

Soft Squares give an elegant, feminine twist to an angular look and has inspired the latest additions to our Classics collection.



*The photos on this page are for inspirational purposes only and not for commercial use. You are strictly prohibited from copying or using all or any part of these photos.



Classics

SOFT SQUARE

A timeless favourite in the making.

Styled after the many elegant squares that are dotted around London, this feminine rounded square case evokes the same sophisticated and iconic fashionable look.

Maximum impact is created with its lustrous sunray dial, rounded soft case and our iconic North Star motif as the finishing touch.

Modern and effortless for everyday confidence.



SOFT SQUARE
Quartz Movement
3BAR



**ICONIC
NORTH STAR
MARKER**



**CRYSTAL
STUDED
DIAL**



**ELEGANT
POLISHED BEZEL**

Classics

SOFT SQUARE



24000086

28MM SS 2H Square,
Light Grey Sunray Dial
Crystal Detail Markers,
SS Mesh strap

\$135



24000087

28MM GP 2H Square,
Green Sunray Dial
Crystal Detail Markers,
GP Mesh strap

\$145



24000088

28MM CG 2H Square,
Mushroom Sunray Dial
Crystal Detail Markers,
CG Mesh strap

\$145



24000083

28MM SS 2H Square,
Blue Sunray Dial,
Clear Crystal Detail,
5 Link Bracelet

\$155



24000084

28MM GP 2H Square,
Light Gold Sunray Dial,
Lt Gold Quartz Crystal Detail,
5 Link Bracelet

\$175



24000085

28MM CG 2H Square,
Soft Blush Sunray Dial,
Vintage Rose Crystal Detail,
5 Link Bracelet

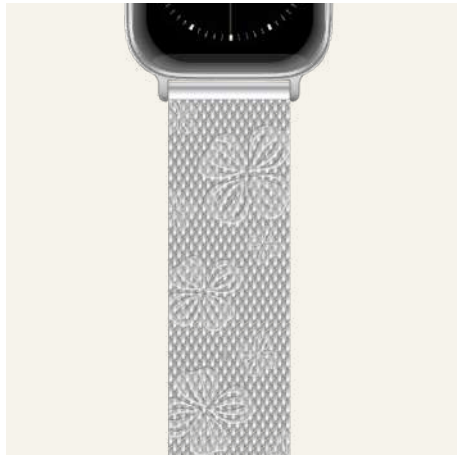
\$175

FW23 May Market Sneak Peak
(SUBJECT TO CHANGE)

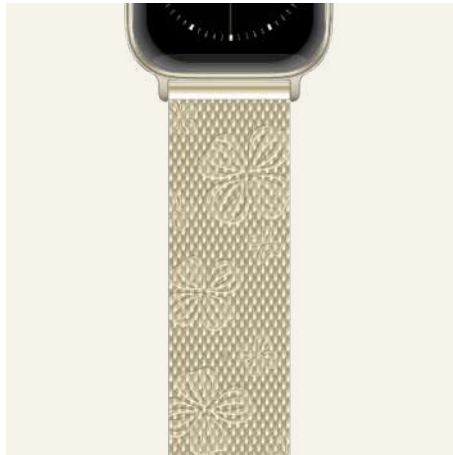
May Market Sneak Peak

WATCH COLLECTION

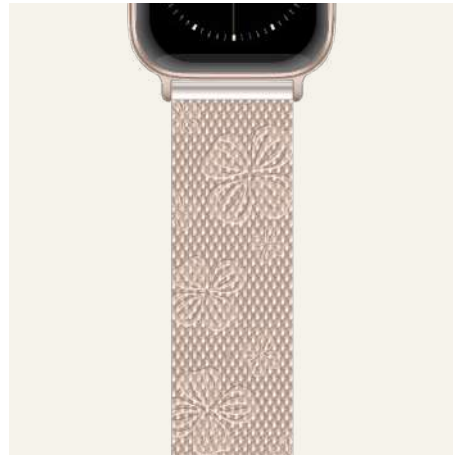
APPLE STRAP
\$80 - \$125



24100073



24100074



24100075



24100076



24100077



24100078

HEXA MULTIFUNCTION
\$215 - \$245



24100100



24100101



24100102



24100103

May Market Sneak Peak

WATCH COLLECTION

DOGWOOD T-BAR

\$155 - \$185



24100089



24100090



24100091



24100092



24100093



24100094

If you have any additional questions,
please contact the Olivia Burton marketing team.

OLIVIA BURTON

L O N D O N

www.oliviaburton.com
[@oliviaburtonlondon](https://www.instagram.com/oliviaburtonlondon)